



**UNITED STATES COURT OF APPEALS
FOR THE FOURTH CIRCUIT**

**MONTHLY STATISTICAL REPORT
October 31, 2017**

CASE MANAGEMENT SUMMARY			
	11/1/15– 10/31/16	11/1/16– 10/31/17	Percent Change
FILINGS	6350	4449	-30%
DISPOSITIONS	6257	4612	-26%
PENDING	2598	2435	-6%

REPORT CONTENTS:

I. FILINGS: Pro Se and Counseled, Monthly Data, Annual Data2

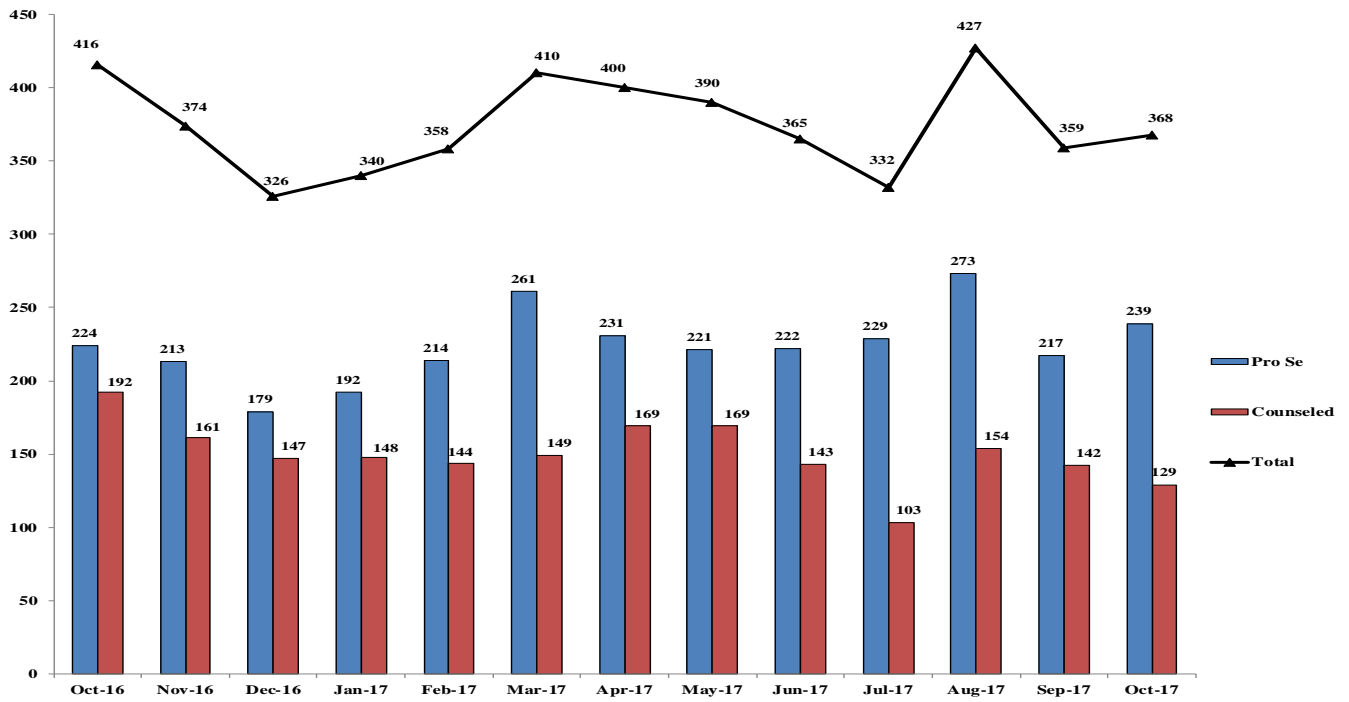
II. DISPOSITIONS: Pro Se and Counseled, Monthly Data, Annual Data4

III. PENDING: Pro Se and Counseled, Monthly, Annual Data.....5

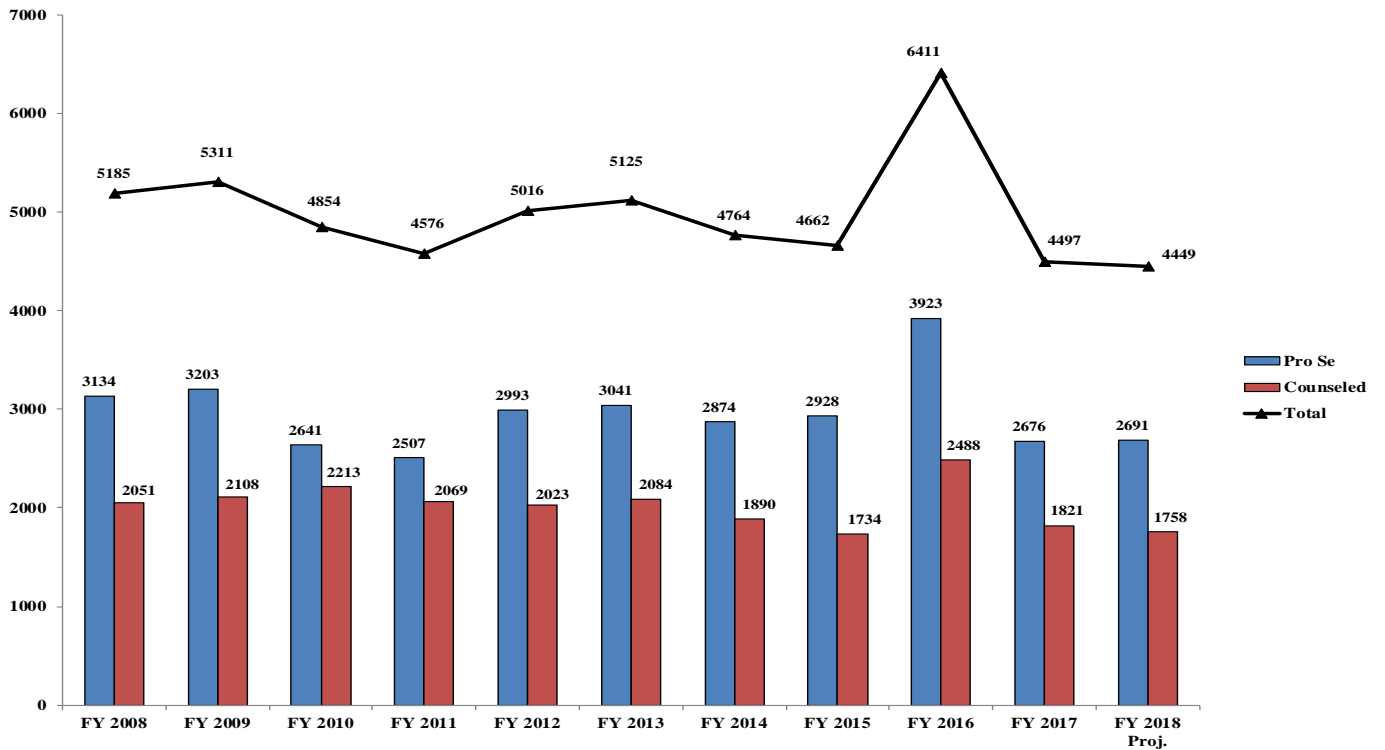
IV. MEDIAN DISPOSITION TIME: Fourth Circuit and National Data6

I. FILINGS

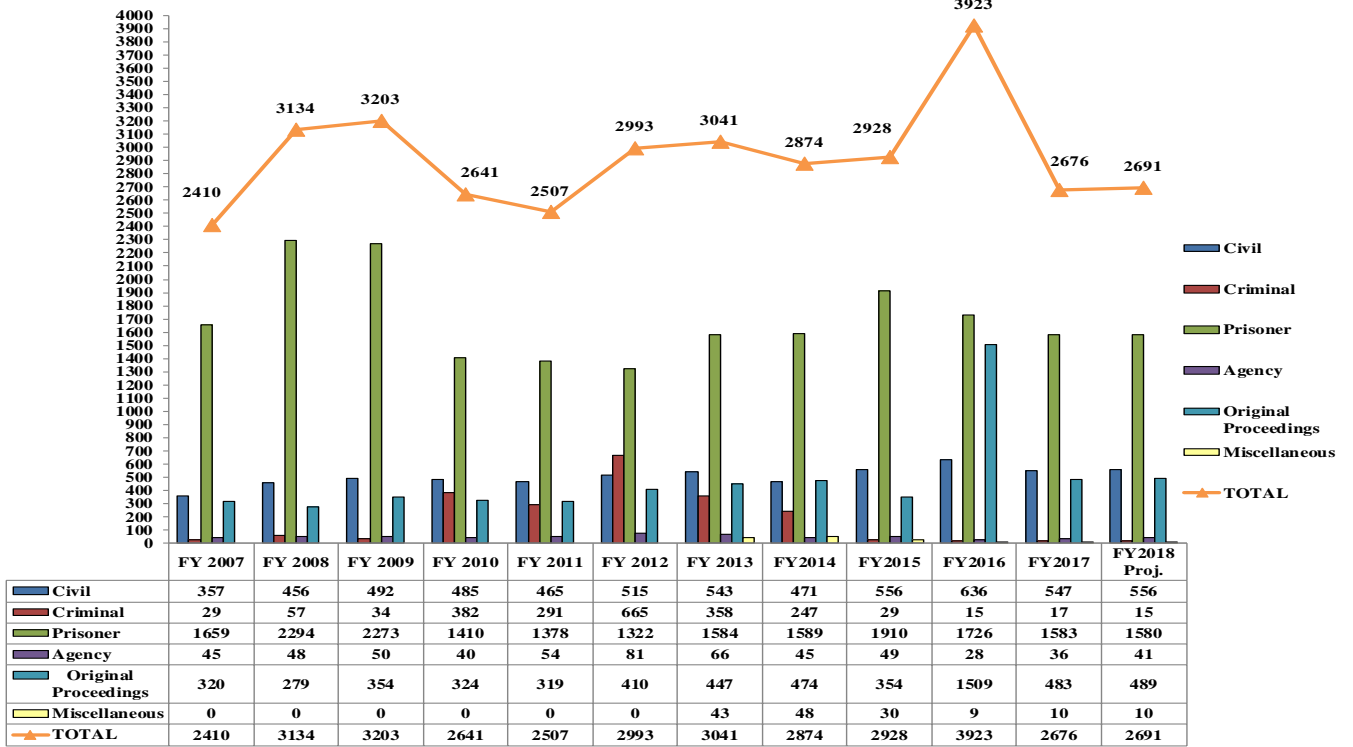
**Monthly Pro Se and Counseled Case Filings
October 2016 - October 2017**



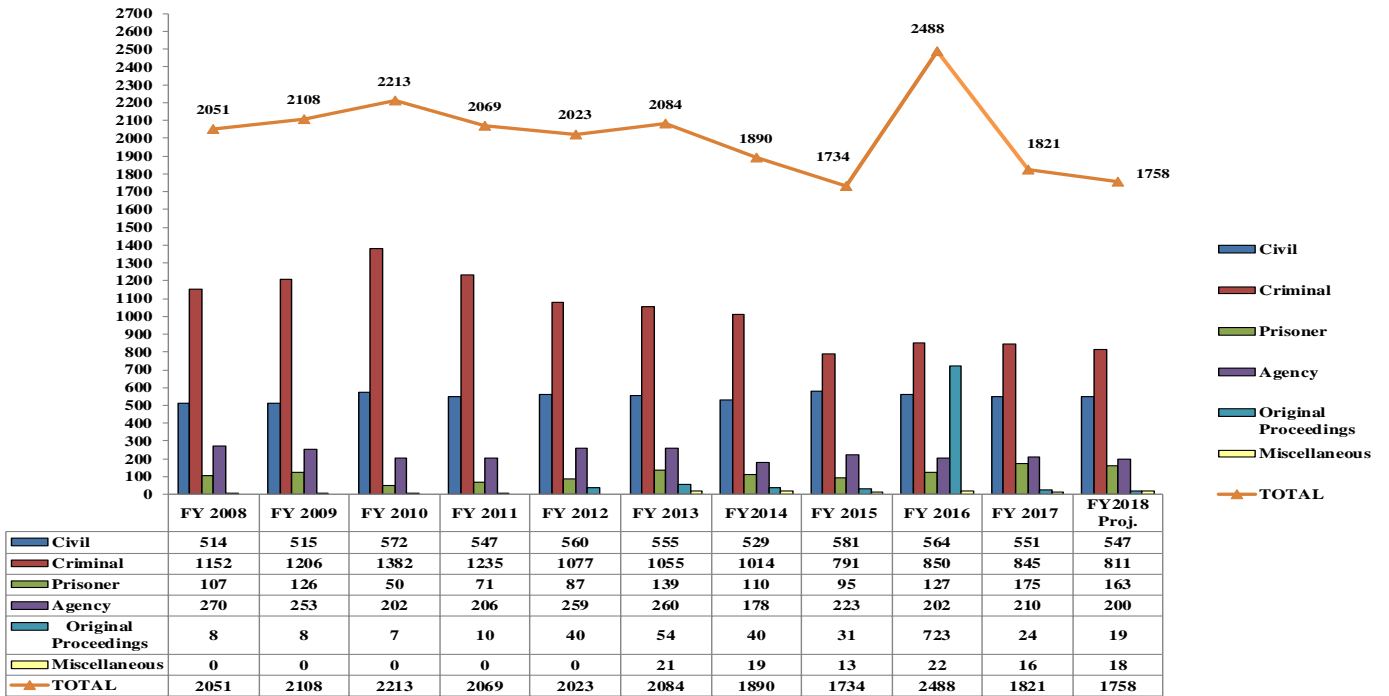
**Annual Pro Se and Counseled Case Filings
Projected Through Fiscal Year Ending September 30, 2018**



**Annual Pro Se Filings by Case Type
Projected Through Fiscal Year Ending September 30, 2018**

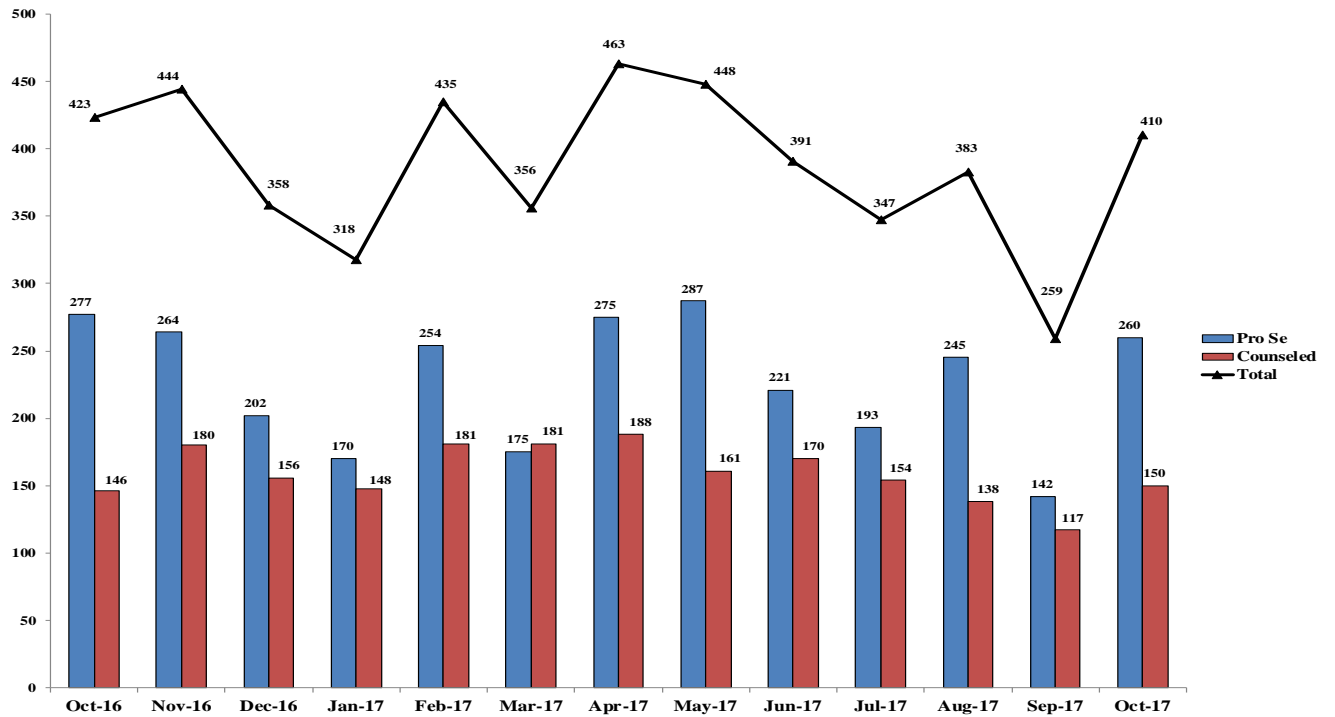


**Annual Counseled Filings by Case Type
Projected Through Fiscal Year Ending September 30, 2018**

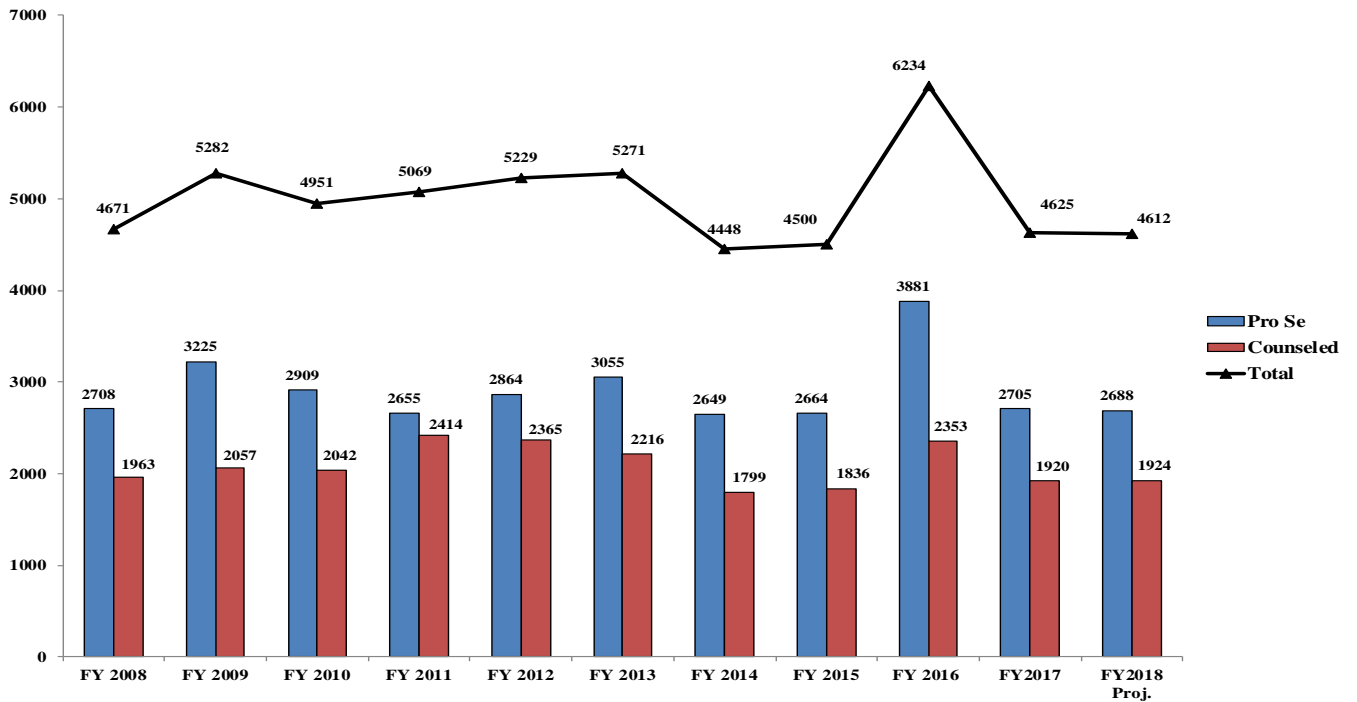


II. DISPOSITIONS

**Monthly Pro Se and Counseled Case Dispositions
October 2016 - October 2017**

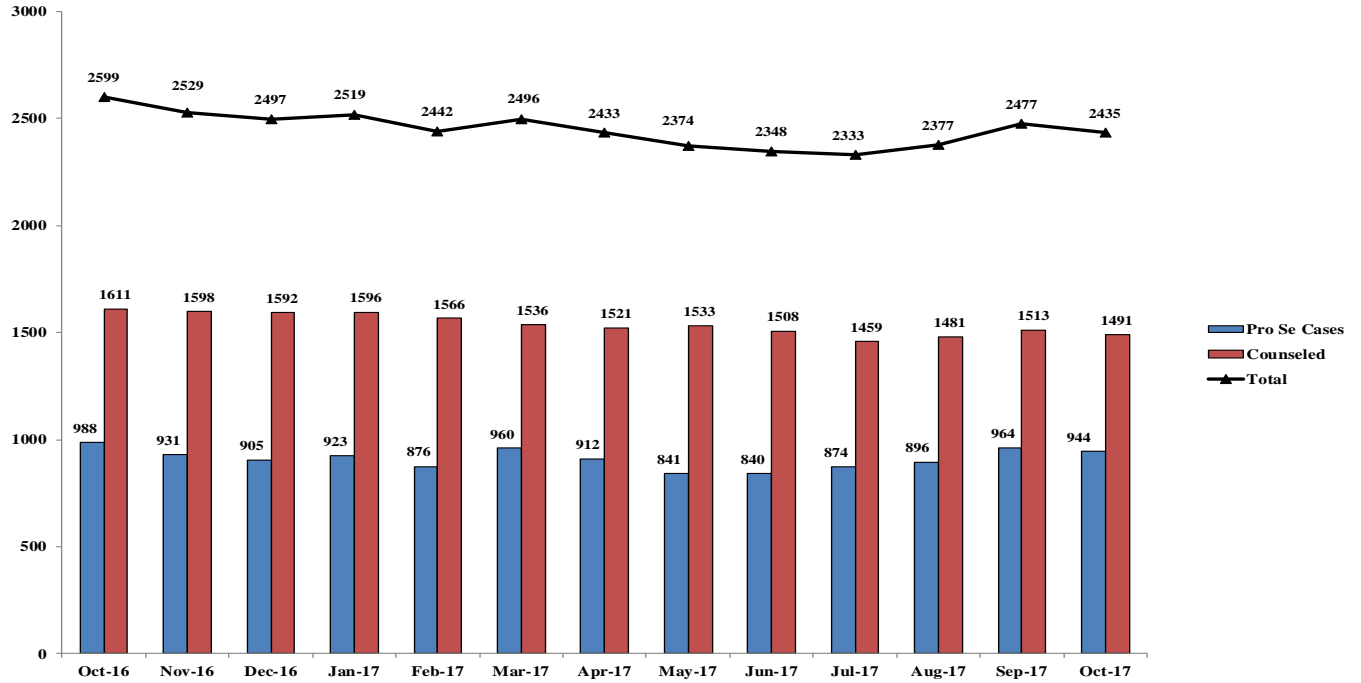


**Annual Pro Se and Counseled Case Dispositions
Projected Through Fiscal Year Ending September 30, 2018**

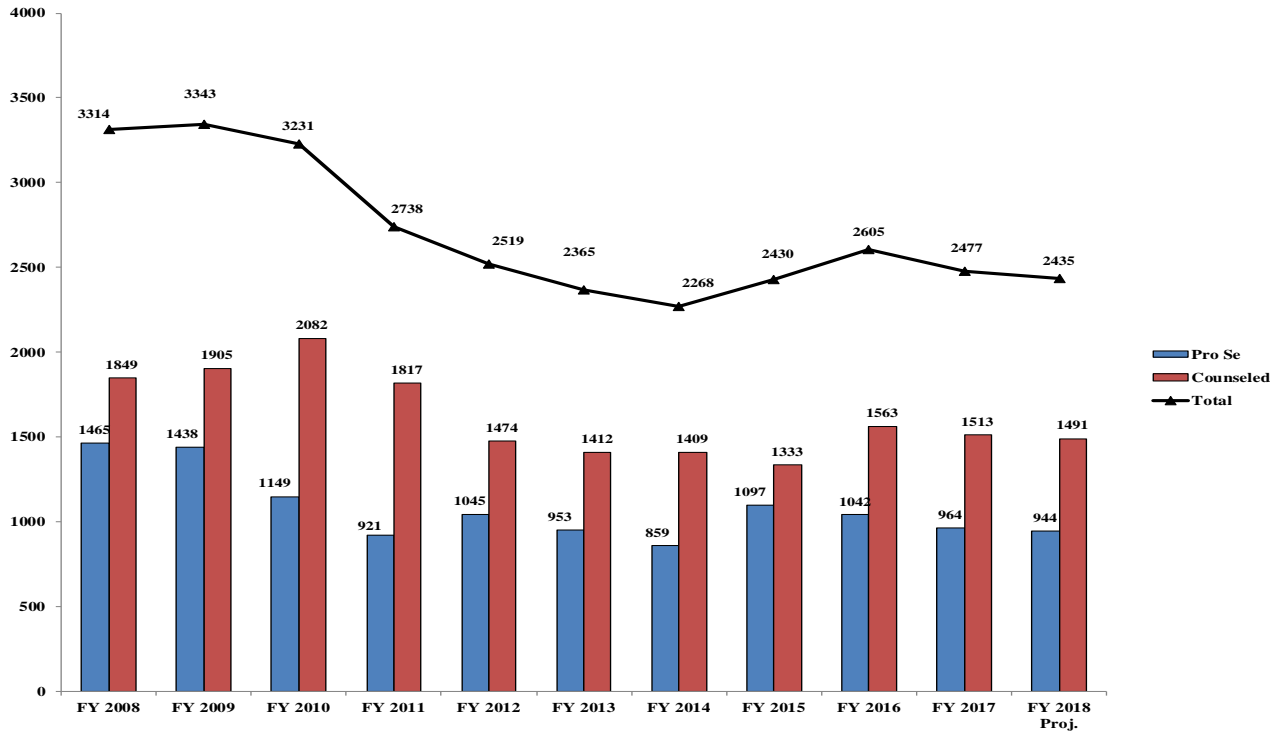


III. PENDING CASES

Monthly Pending Caseload for Pro Se and Counseled Cases
October 2016 - October 2017



Annual Pending Caseload - Pro Se & Counseled Cases



IV. MEDIAN DISPOSITION TIME

Median Disposition Time for Decisions on the Merits

